

# Almina

## Geothermal Biomineral

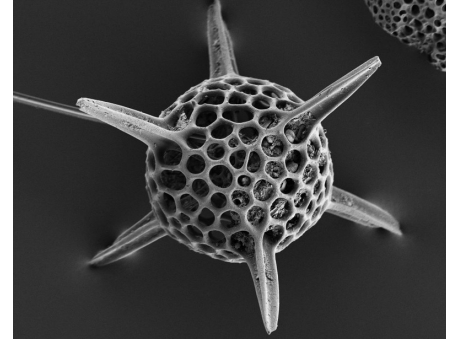


Almina is a Geothermal Biomineral composition of organic origin rich in Silicon and Alginic Acid content.

Biominerals in Almina are supplied from the mining site located in Turkey's largest Geothermal Field. They are enriched naturally by trace elements and rare earth elements carried by superheated steam and boiling water over thousands of years, and they are called Geothermal Biominerals.

### Almina:

- Provides resistance to biotic/abiotic stress conditions.
- Increases yield by stimulating plant growth and development.
- Increases nutrient and water uptake from the soil by inducing root growth.
- Increases photosynthesis by accelerating the formation of chlorophyll.
- Increases sprouting and improves flowering and fruit setting processes.
- Provides homogenisation for fruit growth
- It strengthens the defense mechanism of the plant.
- It provides balanced and long-term intake of macro and micro nutrients.
- Nurtures plants affected by cold damage back to its health by reconstructing and rehabilitating damaged cells.



### CHEMICAL ANALYSIS

<u>CONTENT</u>	<u>%</u>
SiO <sub>2</sub>	52,50
CaO	8,10
SO <sub>3</sub>	3,70
MgO	3,00
Fe <sub>2</sub> O <sub>3</sub>	1,10
ALGINIC ACID	1,80

### CONTACT US

#### Company HQ

Güzeloba Mh. Çağlayangil  
Cd. No: 3/B  
Muratpaşa/Antalya

info@mitalya.com  
0090 553 321 96 47  
www.mitalya.com

#### Processing Facilities

Sakarya Mh, Tarım Cd,  
No:13 Tariş  
Sarayköy/Denizli

# Almina

Geothermal Biomineral



## Application Instructions

Product	Spring	Foliar	Seed	Granule
Fruit Trees	-	1,5 kg / 100 liters 3-4 week intervals 3-6 applications	-	0,5-1 kg / tree 50-150 gr / sapling
Field Crops	2-3 kg / da 2-4 Week intervals At every irrigation	0,5-1 kg / da 2-4 week intervals 1-3 applications	Apply on seed directly 3-4 kg / 100 kg seed (for grains)	10-15 kg / da while planting or cultivating
Vines	-	1,5 kg / 100 liters 3-4 week intervals 3-6 applications	-	10-15 kg / da with other fertilisers
Greenhouses	-	1,5 kg / 100 liters 3-4 week intervals 3-6 applications	Apply on seed directly 3-4 kg / 100 kg seed	10-15 kg / da with other fertilisers

## How to Use

### Agricultural Spraying Machine

- Fill the tank halfway with water.
- Water down the product in a different container.
- Activate the mixer in the tank and add the watered down mix to the tank.
- Fill the rest of the tank with water.
- Do not deactivate the mixer until application is finished.

### Grain Seed Coating Application

- Put seeds in a mixer or on a plastic sheet for manuel mix.
- Add 3-4 kg of Almina for every 100 kg seed
- Mix to homogeneity.
- Add mix to grain drill.

## Contact Us

### Company HQ

Güzeloba Mh. Çağlayangil  
Cd. No: 3/B  
Muratpaşa/Antalya

info@minitalya.com  
0090 553 321 96 47  
www.minitalya.com

### Processing Facility

Sakarya Mh, Tarım Cd,  
No:13 Tariş  
Sarayköy/Denizli